

DynaQuip

VME Series Medium Pressure (1,500 to 2,000 psi CWP) Carbon Steel Ball Valve

Two-piece, screwed-body, medium pressure (1,500 to 2,000 psi CWP/150 psi WSP) carbon steel ball valves for hydraulic, petroleum and general industrial applications. Valves have carbon steel body (forged 1 1/4" to 2"; bar stock 1/4" to 1") with corrosion-resistant phosphate coating, chrome-plated steel ball, reinforced PTFE and female NPT end connections.

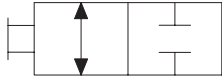


- Features:**
- Blowout-proof stem
 - Adjustable packing
 - Quality valve manufactured in USA

- Applications:**
- Hydraulic
 - Petroleum
 - General industrial service

- Options:**
- Stainless trim
 - Available with lockout or oval handles

Body Material: Carbon Steel
Temperature Range: -20 °F to 425 °F
Ball Material: Steel
Ball Seats: RTFE
Stem Material: Steel
Stem Seals: RTFE
Valve Type: 2-Way



Full Port – NPT

Body Style	Max. Pressure (psi)	Connection Size (in)	Order No.	Mfr. No.	Net Price
2 Piece	2,000	1/4	MA101945113	VME2.A9 1/4	\$21.50
		3/8	MA101945112	VME2.A9 3/8	21.50
		1/2	MA101946433	VME1.A9 1/2	23.21

Standard Port – NPT

Body Style	Max. Pressure (psi)	Connection Size (in)	Order No.	Mfr. No.	Net Price
2 Piece	1,500	1 1/4	MA101958990	VME1.A9 1 1/4	\$73.84
		1 1/2	MA101945114	VME1.A9 1 1/2	92.65
		2	MA101946435	VME1.A9 2	126.42
	2,000	3/4	MA101944770	VME1.A9 3/4	33.12
		1	MA101946434	VME1.A9 1	44.13

DynaQuip

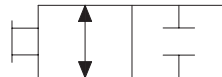
VME3 Series One-Piece Economy Carbon Steel Ball Valve

Medium pressure (1,500 to 3,000 psi CWP/150 psi WSP) carbon steel valves for hydraulic, petroleum and general industrial applications. Valves have a reduced port, corrosion-resistant phosphate coating, chrome-plated steel ball, reinforced PTFE seats and female NPT end connections.



- Features:**
- Quality valve manufactured in USA
 - Blowout-proof stem
 - Adjustable packing
- Options:**
- Stainless trim
 - A 2,000 psi maximum pressure and Delrin® seats (180 °F max. temperature) are available for 1 1/4" to 2" valves
 - Lockout or oval handles
- Applications:**
- Hydraulic
 - Petroleum
 - General industrial service

Body Material: Carbon Steel
Temperature Range: -20 °F to 425 °F
Ball Material: Steel
Ball Seats: RTFE
Stem Material: Steel
Stem Seals: RTFE
Valve Type: 2-Way



Reduced Port – NPT

Body Style	Max. Pressure (psi)	Connection Size (in)	Order No.	Mfr. No.	Net Price
1 Piece	1,500	1 1/2	MA101953170	VME3.A9 1 1/2	\$69.68
		2	MA101943355	VME3.A9 2	89.74
	2,000	3/4	MA101943678	VME3.A9 3/4	25.72
		1	MA101953169	VME3.A9 1	35.65
		1/2	MA102067840	VME3.AK1/2	23.60

DynaQuip

VLE Series Medium/High Pressure (3,000 psi CWP) Carbon Steel Ball Valve

Full port, two-piece, medium/high pressure (3,000 psi CWP/150 psi WSP) carbon steel ball valve for hydraulic, petroleum and general industrial applications.



- Features:**
- Quality valve manufactured in USA
 - NPT or SAE o-ring boss end connections
 - Reinforced PTFE seats
 - Chrome-plated steel ball
 - Corrosion-resistant zinc phosphate coating
 - Blowout-proof stem
 - Adjustable packing

- Applications:**
- Hydraulic
 - Petroleum
 - General industrial applications
 - Medium pressure hydraulic valves

- Options:**
- Additional sizes available with SAE O-ring boss end connection
 - Locking handle available

Body Material: Carbon Steel
Temperature Range: -20 °F to 425 °F
Ball Material: Chrome Plated Steel
Ball Seats: RTFE
Stem Material: Steel
Stem Seals: RTFE
Valve Type: 2-Way

Full Port – NPT

Body Style	Max. Pressure (psi)	Connection Size (in)	Order No.	Mfr. No.	Net Price
2 Piece	3,000	1/4	MA101951441	VLE2.AK 1/4	\$23.59
		3/8	MA101959003	VLE2.AK 3/8	23.59
		1/2	MA101945044	VLE2.AK 1/2	51.71
		3/4	MA101959004	VLE2.AK 3/4	64.32
		1	MA101943367	VLE2.AK 1	95.63

Full Port – SAE

Body Style	Max. Pressure (psi)	Connection Size (in)	Order No.	Mfr. No.	Net Price
2 Piece	3,000	SAE-4	MA101944789	VLE2.NK 1/4	\$31.37

DynaQuip

VMB1 Series Two-Piece Screwed Body Stainless Steel Ball Valve

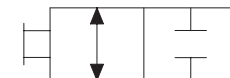


- Features:**
- Panel mounting pad
 - Adjustable stem packing
 - Fx F NPT end connections
 - Reinforced PTFE seats
 - Steam rating: 150 psi WSP

- Applications:**
- General chemical service

- Options:**
- Locking or oval handles available

Body Material: Stainless Steel
Temperature Range: -20 °F to 425 °F
Ball Material: Stainless Steel
Ball Seats: RTFE
Stem Material: Stainless Steel
Stem Seals: RTFE
Valve Type: 2-Way



- Compliances:**
- NACE MRO175 compliant

Full Port – NPT

Body Style	Max. Pressure (psi)	Connection Size (in)	Order No.	Mfr. No.	Net Price
2 Piece	2,000	1/4	MA101965090	VMB2.A9 1/4	\$39.18
		3/8	MA101942965	VMB2.A9 3/8	39.18
		1/2	MA101965091	VMB1.A9 1/2	42.54

Standard Port – NPT

Body Style	Max. Pressure (psi)	Connection Size (in)	Order No.	Mfr. No.	Net Price
2 Piece	1,500	1 1/4	MA101978430	VMB1.A9 1 1/4	\$129.84
		1 1/2	MA101943358	VMB1.A9 1 1/2	148.18
	2,000	2	MA101972249	VMB1.A9 2	179.39
		3/4	MA101944772	VMB1.A9 3/4	61.64
		1	MA101942283	VMB1.A9 1	74.06